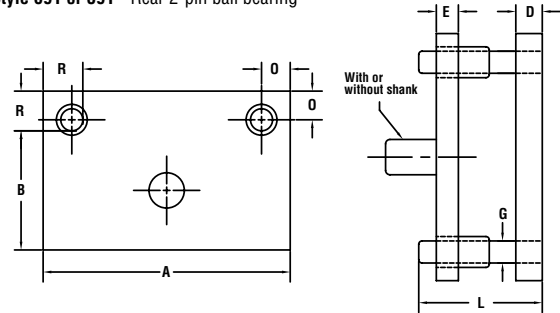


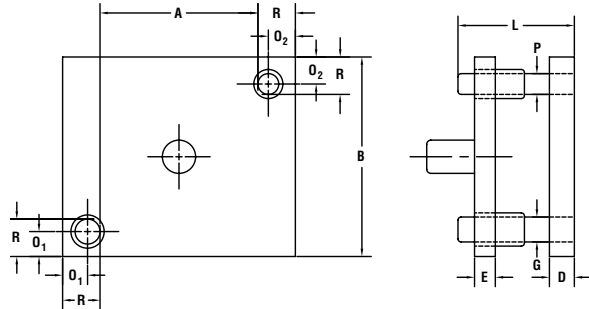
- Many styles and sizes available to meet your die set needs
- Manufactured from A-36 hot rolled steel or aluminum plates
- All plates are stress relieved up to 23" with flame cut edges and ground to clean up unless otherwise specified
- Available with your choice of plain bearing or ball bearing components
- We have the capability to add bolt holes, milled pockets, torch cut burn outs and handling holes, or other machining your application requires (Prints are required for additional machining and must be specified when ordering.)

ORDERING INFORMATION: To order specify: 1) Style of Die Set 2) Quantity 3) Dimensions for A, B, D & E
4) Guide pin diameter and length 5) Type of bushing 6) Shank size or no shank

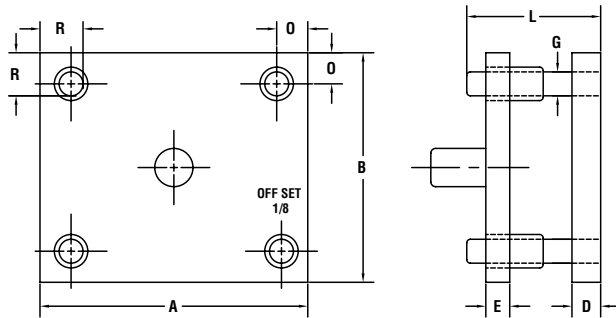
Style 391 - Rear 2-pin plain bearing
Style 691 or 591 - Rear 2-pin ball bearing



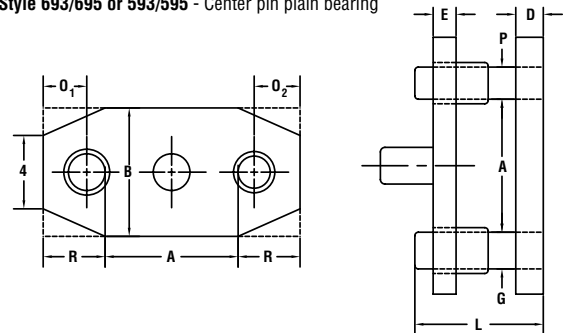
Style 392 - Diagonal plain bearing
Style 692 or 592 - Diagonal pin ball bearing



Style 396 - 4-pin plain bearing
Style 696 or 596 - 4-pin ball bearing



Style 393/395 - Center pin plain bearing
Style 693/695 or 593/595 - Center pin plain bearing



Pin Locations

When G is:	1	1 1/4	1 1/2	1 3/4	2	2 1/2	3
R is:	2	2 1/4	2 1/2	2 3/4	3	3 3/4	4 1/4
O is:	1 1/2	1 5/8	1 3/4	1 7/8	2	2 1/2	2 3/4

Style 391 - Rear 2-pin plain bearing
Style 396 - 4-pin plain bearing

Pin Locations

When G is:	1 1/4	1 1/2	1 3/4	2	2 1/2	3
O1 is:	1 5/8	1 3/4	1 7/8	2	2 1/2	2 3/4
P is:	1	1 1/4	1 1/2	1 3/4	2	2 1/2
O2 is:	1 3/4	1 7/8	2	2 1/8	2 3/4	3
R is:	2 1/4	2 1/2	2 3/4	3	3 3/4	4 1/4

Style 392 - Diagonal plain bearing
Style 393/395 - Center pin plain bearing

Ball Bearing Pin Locations

- Style 696 or 596** - 4-pin ball bearing
- Style 691 or 591** - Rear 2-pin ball bearing
- Style 692 or 592** - Diagonal pin ball bearing
- Style 693/695 or 593/595** - Center pin ball bearing

Custom Plates
Available per your specifications in steel or aluminum.

Ball Bearing Series 500

When G is:	1	1 1/4	1 1/2	1 3/4	2	2 1/2
O is:	1 11/16	1 13/16	2 1/6	2 3/16	2 9/16	2 15/16
R* is:	2 5/8	2 7/8	3 3/8	3 5/8	4 1/8	4 13/16

Ball Bearing Series 600

When G is:	1	1 1/4	1 1/2	1 3/4	2	2 1/2
O is:	1 1/2	1 13/16	2	2 1/8	2 7/16	2 5/8
R* is:	2 3/8	2 7/8	3 1/4	3 1/2	4	4 1/2

* R Dimension is to the outside edge of the bushing diameter