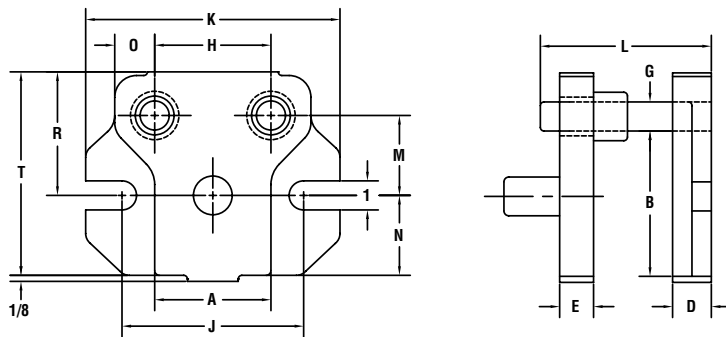


ORDERING INFORMATION:

To order specify:

- 1) Catalog Number
- 2) Quantity
- 3) Type of bushings
- 4) Guide pin length
- 5) Shank size or no shank



Rear 2 Pin Die Sets

DIECO Part #	DIE SPACE		THICKNESS		Approx ship weight (lbs.)	GENERAL DIMENSIONS								
	LEFT TO RIGHT	FRONT TO BACK	DIE HOLDER	PUNCH HOLDER		G	H	J	K	M	N	O	R	T
	A	B	D	E										
33-C-11	3.00	3.00	1.12	1.00	23	0.75	3.00	5.50	7.25	1.75	1.62	0.87	2.75	4.37
43-C-11	4.00	3.00	1.25	1.00	27	1.00	3.00	6.25	8.75	1.75	1.75	1.31	3.19	4.94
44-C-11	4.00	4.00	1.37	1.25	33	1.00	3.00	6.25	8.75	2.25	2.25	1.37	3.75	6.00
45-C-11	4.00	5.00	1.37	1.25	35	1.00	4.00	6.25	8.75	2.75	2.25	1.37	4.25	7.00
46-C-11	4.50	6.00	1.50	1.25	47	1.00	5.50	6.25	9.25	3.25	3.25	1.37	4.75	8.00
54-C-11	5.00	4.00	1.37	1.25	35	1.00	4.00	7.25	9.75	2.25	2.25	1.37	3.75	6.00
55-C-11	5.00	5.00	1.50	1.25	43	1.00	4.00	7.25	8.75	2.75	2.75	1.37	4.25	7.00
64-C-11	6.50	4.50	1.50	1.25	47	1.00	5.50	8.75	11.25	2.37	2.62	1.37	3.87	6.50
65-C-11	6.50	5.00	1.50	1.25	38	1.00	5.50	8.75	11.25	2.75	2.75	1.37	4.25	7.00
66-C-11	6.50	6.00	1.50	1.25	59	1.00	5.50	8.75	11.25	3.25	3.25	1.50	4.87	8.12
75-C-11	7.50	5.00	1.50	1.25	65	1.00	6.50	9.87	12.37	2.75	2.75	1.37	4.25	7.00
77-C-11	7.50	7.00	1.50	1.25	67	1.00	6.50	9.75	12.25	3.62	3.87	1.37	5.12	9.00
84-C-11	8.50	4.00	1.50	1.25	58	1.00	7.62	10.75	13.25	2.25	2.25	1.37	3.75	6.00
88-C-11	8.50	8.00	1.50	1.25	85	1.00	7.62	10.75	13.25	4.25	4.25	1.37	5.75	10.00
95-C-11	9.50	5.00	1.50	1.25	67	1.00	7.62	11.75	14.25	2.75	2.75	1.37	4.25	7.00
105-C-11	10.00	5.50	1.50	1.25	75	1.25	8.75	12.25	14.75	3.12	3.00	1.50	4.75	7.75
1010-C-11	10.00	10.00	1.62	1.37	130	1.25	11.00	12.25	14.75	5.31	5.31	1.62	7.06	12.37

Foot Press Die Sets

DIECO Part #	DIE SPACE		THICKNESS		Approx ship weight (lbs.)	GENERAL DIMENSIONS								
	LEFT TO RIGHT	FRONT TO BACK	DIE HOLDER	PUNCH HOLDER		G	H	J	K	M	N	O	R	T
	A	B	D	E										
A-33	3.00	3.25	1.00	1.00	18	0.75	4.00		6.75		1.75		0.62	4.12
A-43	4.00	3.25	1.00	1.00	20	0.75	5.00		7.75		1.75		0.62	4.12
A-53	5.00	3.25	1.00	1.00	22	0.75	6.00		8.75		1.75		0.62	4.12
A-44	4.00	4.25	1.00	1.00	22	0.75	5.00		7.75		2.25		0.62	5.12
A-54	5.00	4.25	1.00	1.00	26	0.75	6.00		8.75		2.25		0.62	5.12
A-64	6.00	4.25	1.00	1.00	30	0.75	7.00		9.75		2.25		0.62	5.12
A-65	6.00	5.25	1.00	1.00	34	0.75	7.00		9.75		2.75		0.62	6.12

- Furnished complete with short straight bushings unless shoulder bushings are specified
- Designed for light stamping work on small power presses