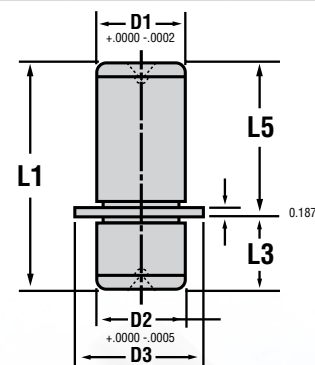


### Demountable Guide Pins

DIECO Part #	D1 & D2 Nom Pin Dia	D3 +.010 -0.015	L3 ±.010	L5 (Ref)
DGP0810	1	1.313	1.188	2.5
DGP0811				2.75
DGP0812				3
DGP0813				3.25
DGP0814				3.5
DGP0815				3.75
DGP0816				4
DGP0817				4.25
DGP0818				4.5
DGP0819				4.75
DGP0820				5
DGP0822				5.5
DGP0824				6
DGP0826				6.5
DGP0828				7
DGP0830				7.5
DGP0832				8
DGP1011	1 1/4	1.563	1.188	2.75
DGP1012				3
DGP1013				3.25
DGP1014				3.5
DGP1015				3.75
DGP1016				4
DGP1017				4.25
DGP1018				4.5
DGP1019				4.75
DGP1020				5
DGP1021				5.25
DGP1022				5.5
DGP1023				5.75
DGP1024				6
DGP1025				6.25
DGP1026				6.5
DGP1027				6.75
DGP1028				7
DGP1029				7.25
DGP1030				7.5
DGP1032				8
DGP1033				8.25
DGP1036				9
DGP1037				9.25
DGP1040				10
DGP1041				10.25
DGP1211	1 1/2	1.875	1.438	2.75
DGP1212				3
DGP1213				3.25
DGP1214				3.5
DGP1215				3.75
DGP1216				4
DGP1217				4.25
DGP1218				4.5
DGP1219				4.75
DGP1220				5
DGP1221				5.25

DIECO Part #	D1 & D2 Nom Pin Dia	D3 +.010 -0.015	L3 ±.010	L5 (Ref)
DGP1222				5.5
DGP1223				5.75
DGP1224				6
DGP1225				6.25
DGP1226				6.5
DGP1227				6.75
DGP1228				7
DGP1229				7.25
DGP1230				7.5
DGP1232				8
DGP1233				8.25
DGP1236				9
DGP1237				9.25
DGP1240				10
DGP1241				10.25
DGP1414	1 3/4	2.250	1.688	3.5
DGP1416				4
DGP1417				4.25
DGP1418				4.5
DGP1419				4.75
DGP1420				5
DGP1422				5.5
DGP1424				6
DGP1426				6.5
DGP1428				7
DGP1430				7.5
DGP1432				8
DGP1434				8.5
DGP1436				9
DGP1438				9.5
DGP1440				10
DGP1446				11.5
DGP1448				12
DGP1614	2	2.500	1.938	3.5
DGP1616				4
DGP1617				4.25
DGP1618				4.5
DGP1619				4.75
DGP1620				5
DGP1622				5.5
DGP1624				6
DGP1626				6.5
DGP1628				7
DGP1630				7.5
DGP1632				8
DGP1634				8.5
DGP1636				9
DGP1638				9.5
DGP1640				10
DGP1642				10.5
DGP1646				11.5
DGP1648				12
DGP1656				14
DGP1658				14.5

DIECO Part #	D1 & D2 Nom Pin Dia	D3 +.010 -0.015	L3 ±.010	L5 (Ref)
DGP1670	2	2.500	1.938	17.5
DGP2018	2 1/2	3.031	1.938	4.5
DGP2020				5
DGP2022				5.5
DGP2024				6
DGP2026				6.5
DGP2028				7
DGP2030				7.5
DGP2032				8
DGP2034				8.5
DGP2036				9
DGP2038				9.5
DGP2040				10
DGP2042				10.5
DGP2048				12
DGP2054				13.5
DGP2056				14
DGP2064				16
DGP2066				16.5
DGP2418	3	3.500	2.438	4.5
DGP2420				5
DGP2422				5.5
DGP2424				6
DGP2426				6.5
DGP2428				7
DGP2430				7.5
DGP2432				8
DGP2434				8.5
DGP2436				9
DGP2438				9.5
DGP2440				10
DGP2442				10.5
DGP2448				12
DGP2454				13.5
DGP2456				14
DGP2464				16
DGP2466				16.5



Demountable guide pins are tap fit and require toe clamps and screws to hold them in place. The clamping flange is ground so that the flange fits squarely against the mounting surface.

- Heavy-duty X-40-Clamps are used to secure the pins to the die shoe.
- Clamps and screws are included.
- DGP Guide Pins with Diameters of 1", 1 1/4" & 1 1/2" have 3 clamps.
- DGP Guide Pins with Diameters of 1 3/4", 2", 2 1/2" and 3" have 4 clamps.